



SPECIFICATION

Recessed Soap Dispenser shall hold and dispense 1.7 litres of liquid and lotion soaps, synthetic detergents and antibacterial soaps containing PCMX and/or Triclosan and shall dispense contents from a step type push-button valve. Dispenser door, mounting frame and push button valve shall be fabricated of stainless steel, grade 304. Door shall be 18 gauge and mounting frame and valve push button shall be fabricated of alloy 18-8 stainless steel, grade 304. Door shall be held closed with a tumbler lock keyed alike to other JD MacDonald washroom equipment and have 13mm square return to wall. Cabinet shall have no exposed fastening devices. Internal soap tank shall be seamless molded leak-proof polyethylene with a large open top for easy refilling. An impact resistant clear plastic liquid level indicator shall be provided. Valve shall be constructed of a chrome-plated brass body with stainless steel and plastic internal parts. Valve operation shall provide actuation with a force less than 2.26kg or pressure, requiring only one hand and with no tight grasping, pinching or twisting of the wrist required. All exposed panel surfaces shall have a No. 4 satin finish and face panel assembly with tank, sight gauge and valve shall be protected during shipment in a plastic bag.

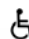
INSTALLATION

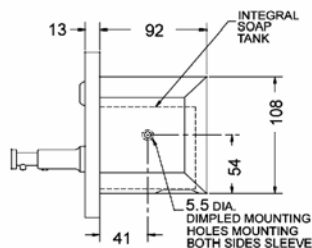
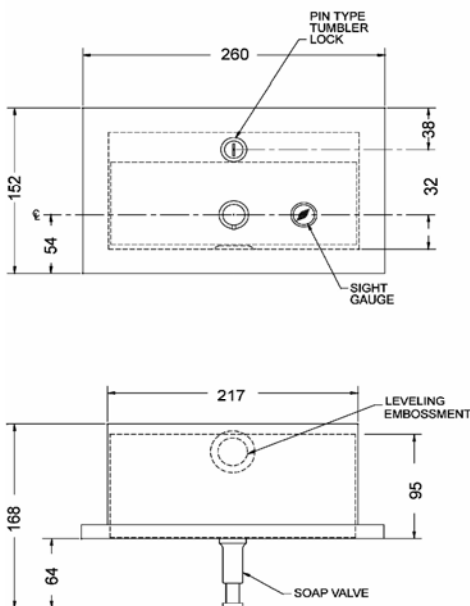
Unit is mounted in wall recess using two (2) No. 10 self tapping screws (supplied by others) through concealed mounting holes provided. Note that top of rough wall opening is 14mm below top of unit. Rough Wall Opening (RWO) required is 230mm x 125mm x 110mm. For mounting height standards refer to current Building Code of Australia for able bodied and/or disabled use.

OPERATION

Soap is manually dispensed by pushing valve button until supply is depleted. Unit may be reloaded easily by removing door/tank assembly with a partial load in place and will continue to feed properly. Tank supply is replenished manually on cycle determined by maintenance needs.

Recessed Soap Dispenser shall be Model No. 0326 as supplied by JD MacDonald.

 All JD MacDonald disabled compliant products when installed must be in accordance with AS1428 to ensure the specified product is complying with all washroom specification requirements.



JD MacDonald reserves the right to, and does from time to time, make changes and improvements in design and dimensions. The photographs and line drawings of the products in this flyer are representational only. All dimensions are in millimetres.