

# Top to bottom solutions for garbage and linen management

by **JD MacDonald**

Environmentally Friendly Plastic Chutes

Traditional Steel Chutes

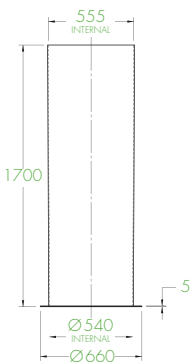
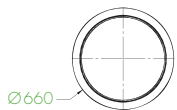
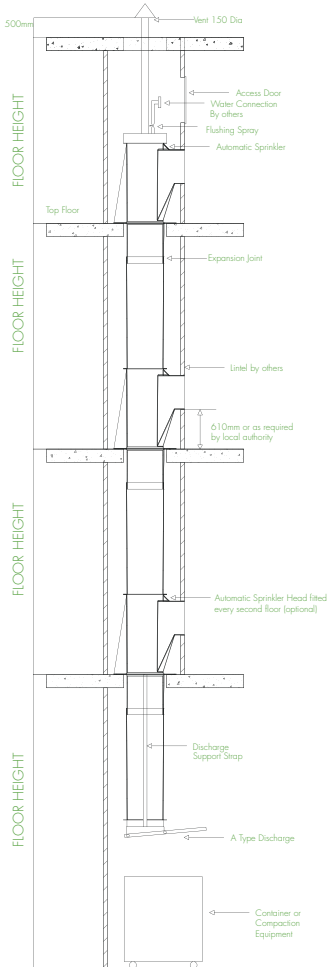
Rotobin Collection and Compaction

Waste Management Consultancy Service



# EnviroTube

EnviroTube – The Smooth Operator – is today's solution to a more cost effective and environmentally friendly Rubbish & Linen chute system. Made from a guaranteed blend of 100% recycled plastic materials\*, the EnviroTube is engineered on the basis of fast and easy installation, low maintenance and an ultra smooth finish. As such, the EnviroTube is a cheaper and substantially quieter alternative to the traditional Steel Chute Systems.



enviro  
tube

the smooth operator.

## Key Features:

1. Guaranteed to be made from a blend of 100% recycled plastic materials\*
2. Quieter & more cost effective alternative to steel & cement chutes
3. Faster & easier installation than standard metal & cement chutes
4. Greener & more hygienic solution

## Modular Design Benefits:

- Light weight sections enable ease of installation
- 5mm thick sections reduce impact noise and vibration, resulting in a quieter chute solution
- Acoustic treatment is not required due to the thickness of each section
- Moulded connection of loading throat for a less restricted flow, no sharp angles and reduced impact
- Flexibility to cope with building variations



ENTRY CHUTE



INTERMEDIATE SECTION

## Cost Effective & Low Maintenance Benefits:

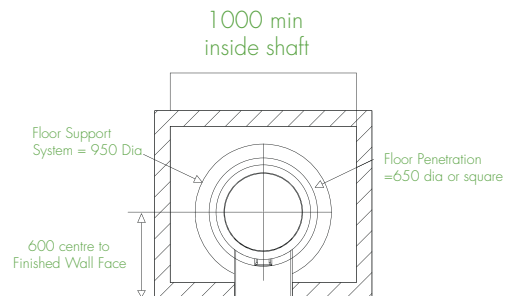
- Recycled plastic material is a more cost effective alternative to a traditional steel and cement chute
- Faster installation resulting in reduced labour costs
- Light weight sections eliminate the need for costly specialist lifting equipment
- Self cleaning unit reduces bacteria build up and resists offensive odours
- Ultra smooth finish means a cleaner non porous solution

## Designed & Manufactured in Australia:

- Supporting Australian made products and the Australian economy
- Fully engineered product for the Australian market ensures product quality and consistency
- Service and parts readily available through local suppliers together with unsurpassed after sales support

## Safety & Compliant:

- Light weight sections reduce risk of injury
- Moulded sprinkler locations allow fire treatment of the chute system at all levels (builder can select levels that require fire treatment)
- Unit is non-operable until completely installed, eliminating premature use of chute and reducing the risk of injury

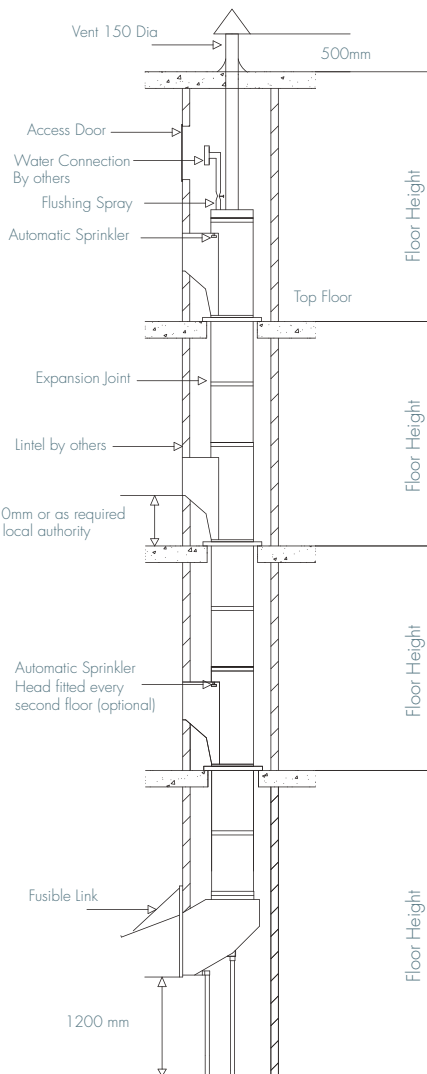


Fire Rated Door  
With Close Off  
550 Dia Garbage Chute

\*Subject to availability

# Steel Range Linen Chute

The JD MacDonald Steel Chute range is designed with safety and ease of installation in mind, given each section of the chute is lightweight and easily moveable. Through researching and embracing modern chute technologies, JD MacDonald continues to produce the highest quality, lightweight commercial and residential Chute Solutions for today's Australian market place.



## Key Features:

1. Proven & robust design
2. Chutes fully factory assembled, with all joints except those required to separate for shipment being welded
3. All sections flash into one another with no bolts, clips or other projections to obstruct flow of material
4. Can be individually fabricated to suit each projects needs including diameter

## Modular Design Benefits:

- Available in 1.6mm Zinalume, Stainless Steel or Galvabond
- Intake is via a stainless steel, self closing, hydraulic, hand-operated, side-hinged door with 180 degree opening for easy operation
- All Linen Doors carry a two hour fire rating label and have a fire resistant level (FRL) of NA /120/30 for Australian Standards 1530.4 – 1990
- A hydraulic check ensures a smooth quiet close whilst also makes opening the door easier
- All Linen Chute doors come with cylinder locks to prevent unauthorised access
- Locks are keyed alike and are configured so that doors are locked at all times
- Available with Electronic Interlocking feature

## Safety & Compliant:

- Light weight sections reduce risk of injury
- Sprinkler locations allow fire treatment of the chute system at all levels (builder can select levels that require fire treatment)

## Designed & Manufactured in Australia:

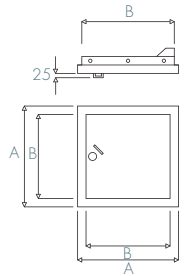
- Supporting Australian made products and the Australian economy
- Fully engineered product for the Australian market ensures product quality and consistency
- Service and parts readily available through local suppliers together with unsurpassed after sales support

## Recommended Accessories:

- Roof Vent
- Fire Sprinklers

## Linen Chute Door Sizes (mm):

SIZE	A	B
381 x 381	508	394
457 x 457	584	470
530 x 530	660	546
610 x 610	737	622



## Linen Chute Discharge Option:

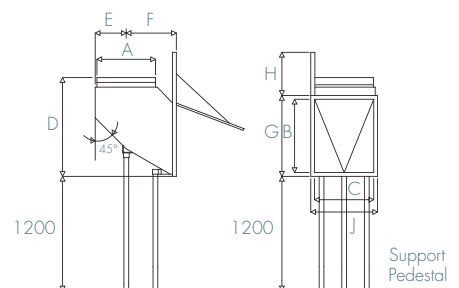
### H-Type Discharge:

- H-Type hopper is used when the discharge is built into a wall
- The opening is formed on to the door frame, while the sloped bottom is reinforced with a 3mm Galvanised Steel impact plate and supported on a 50mm pipe pedestal
- The door is top-hinged, and 25mm thick insulation in a Zinalume Steel inner cover with Stainless Steel fascia
- H-Type Discharge is not fire rated

*NOTE: A-Type outlets can be substituted where heavy usage requires the discharge be left open to prevent build up.*

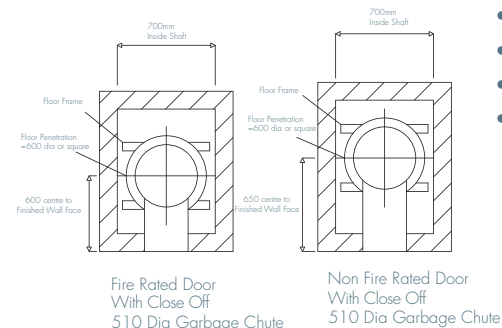
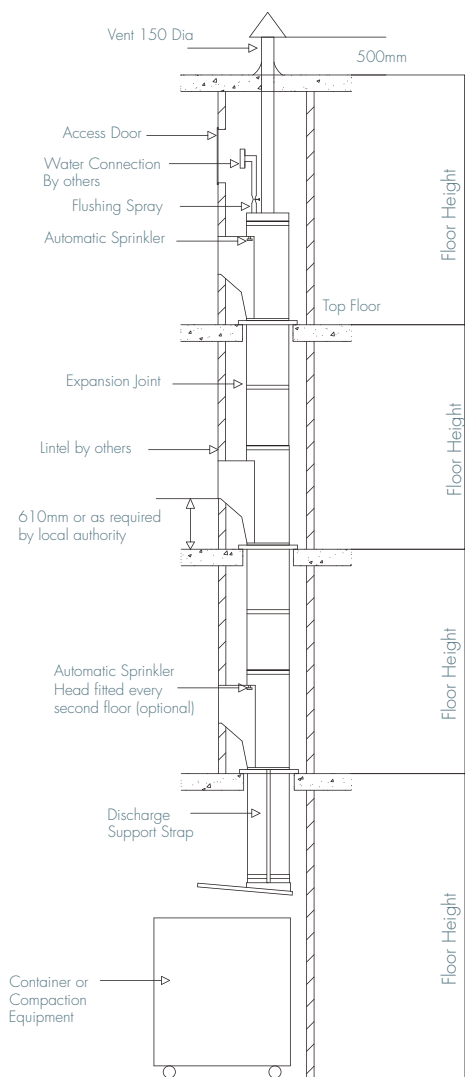
### H-Type Discharge Dimensions (mm):

A	B	C	D	E	F	G	H	I
710	917	714	1187	375	599	1000	329	797
610	765	613	1035	324	508	848	305	695
510	765	511	1035	273	457	848	229	594
457	765	460	1035	248	432	848	203	543



# Steel Range Garbage Chute

All JD MacDonald Steel Chutes are designed, engineered and manufactured in Australia, proudly supporting Australian Made products and the Australian Economy. Each section of a JD MacDonald Steel Chute is specifically designed to fit directly into the section below; with no bolts, clips or other projections in order to successfully allow the continuous flow of all waste materials.



## Key Features:

1. Proven & robust design
2. Chutes fully factory assembled, with all joints except those required to separate for shipment being welded
3. All sections flash into one another with no bolts, clips or other projections to obstruct flow of material
4. Can be individually fabricated to suit each projects needs including diameter

## Modular Design Benefits:

- Available in 1.6mm Zinalume, Stainless Steel or Galvabond
- Fire Rated Doors (FR) or Non Fire Rated Doors (NFR)
- FR Doors are high quality Stainless Steel, self closing, hydraulic, hand operated and bottom hinged
- FR Doors carry a two hour fire rating label and have a fire resistant level (FRL) of NA /120/30 for Australian Standards 1530.4 – 1990
- A hydraulic check ensures FR Doors have a smooth quiet close whilst also makes opening the door easier
- NFR Doors are self closing, bottom hinged & non combustible
- NFR Doors are made from Zincaneal steel construction suitable for a paint finish

## Safety & Compliant:

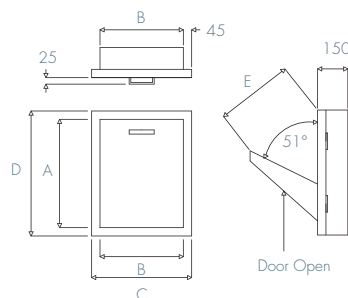
- Light weight sections reduce risk of injury
- Sprinkler locations allow fire treatment of the chute system at all levels (builder can select levels that require fire treatment)

## Recommended Accessories:

- Flushing Spray
- Intake close-off devices
- Fire Sprinklers
- Sound Lagging
- Isolator Mounts

## Garbage Chute Door Sizes (mm):

SIZE	A	B	C	D	E
381 x 457	470	394	508	584	330FR
533 x 457	470	546	660	584	330FR
610 x 610	622	622	737	737	450FR
360 x 340	350	325	430	410	230NFR



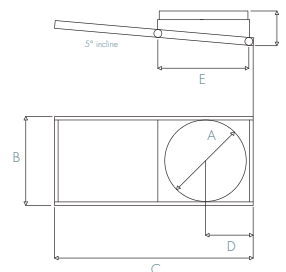
## Garbage Chute Discharge Option:

### A-Type Discharge:

- A-Type horizontal rolling door is used for garbage or linen chutes with an open end discharge
- The door is constructed from Zinalume Steel with an insulated filling but is not fire rated
- It is supported by four rollers on inclined tracks and held open by a fusible link. When excess heat breaks the link, gravity makes the door roll shut.

### A-Type Discharge Dimensions (mm):

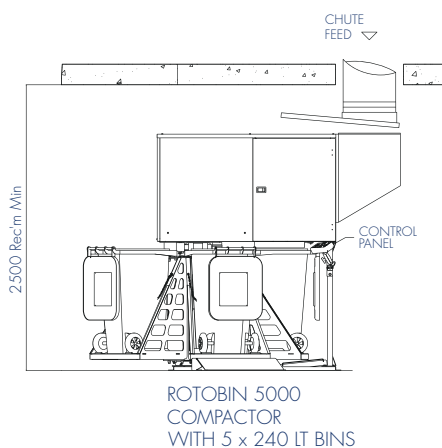
A	B	C	D	E	F
710	860	1551	391	762	263
610	760	1348	340	660	256
510	660	1146	289	559	248
457	610	1045	264	508	241





# Rotobin 5000

Rotobin 5000 is a cost effective, fully automated unit specifically designed for the collection and compaction of rubbish within high density, residential applications. Designed to fit directly under a garbage chute or loading dock, the Rotobin 5000 compacts rubbish into a 'wheelie bin' for removal by hand to the collection area. Working on a rotation basis, as each bin fills, the compactor base automatically rotates, positioning an empty bin under the chute when required. The Rotobin 5000 works perfectly in conjunction with either the EnviroTube or Steel Chute.



## Modular Design Benefits:

- Fits through standard doorways, no special entry required
- Most efficient use of waste room space, can fit into tight waste rooms
- Can be retro fitted
- Low overall unit height
- Standard 5 x 240 litre configuration maximises volume storage per cycle
- Equipped with a control panel mounted to the outside of the machine (Machine may also be operated manually)

## Cost Effective & Low Maintenance:

- High compaction with a reduction in bins required
- Direct compaction into awaiting bins ensures maximum volume per bin
- Increased payload per bin means less bin movements required
- Fully automatic operation with less staff involvement
- Quiet and efficient electric operation
- Reduction in power supply cost, as there is no need for 3 phase power, 240 volt GPO supply only
- No hydraulic leaks and no need for hydraulic expert to service unit

## Safety & Compliant:

- Best practice equipment, OH&S and WorkCover compliant
- Simple operation, easy to diagnose faults messages, machine diagnostics and operation instructions
- Control system with user interface and diagnostics
- All components external to main control box have extra low voltage (24VDC and below)
- Operator's manual provided
- AS/NZS 3820:1998 compliant (essential safety requirements for low voltage electrical equipment)

- AS/NZS 3100:2002 compliant (Australian/New Zealand standards, general requirements for electrical equipment)
- AS4100 compliant (steel structures)
- Risk assessment available

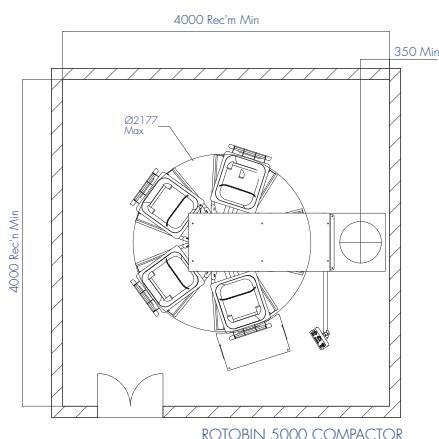
## Designed & Manufactured in Australia:

- Supporting Australian made products and Australian economy
- Fully engineered product for the Australian market ensures product quality and consistency
- Service and parts readily available through local suppliers together with unsurpassed after sales support

## Rotobin Specifications:

Specification	Rotobin 5000
Number of Bins	5
Maximum Capacity	3600 litres
Bin Volume	240 Litres
Chute Opening	790 (H) X 560 (W)
Overall Length	2461 mm
Machine Height	2295 mm
Compaction Cycle Time (Unloaded)	70 sec per bin
Bin Index Cycle Time (1 Station)	8 sec
Compaction Ratio	3 to 1
Compaction Force*	6800 N
Compaction Stroke	500 mm
Compaction Speed (No Load)	15.7 mm/s
Compaction Speed (Full Load)*	12.7 mm/s
Supply Current	10 amps
Minimum Required Room Height	2500 mm
Maximum Machine (Diameter-Width)	2177 mm

The Rotobin requires the supply of primary voltage 240V AC/ single phase, 10 am &, 50Hz. The machine can either be hard wired or plugged into a standard 3 pin GPO.



\*Subject to loading conditions and waste type

# Consultancy Service

A complete consultancy service can be provided including the preparation of Waste Management Plans in accordance with local council development guidelines and planning instruments. This service includes engineering assistance in the design of waste facilities to compliment your overall development. Cost effective equipment options can be tailored to suit each sites specifications and their waste management needs.

## Waste Management Consultancy Service

### DID YOU KNOW...?

JD MacDonald offers a full Waste Management Consultancy Service, designed to provide you with a comprehensive Waste Management Report.

### Key Features of the Waste Management Report:

- Compliant Waste Management Solutions
- Comprehensive Waste Volume Analysis
- Solutions for an efficient & reliable Waste Management System
- Ideal for Multi-unit residential, Commercial & Industrial Mixed-Use Developments
- Seen within the industry as 'Best Practice'

For further information regarding JD MacDonald's Waste Management Consultancy Service, please free call 1 800 023 441.



the smooth operator.

JD MacDonald is a Division of MacDonald Johnston Pty Ltd

MacDonald Johnston Pty Ltd ABN 68 004 992 090  
65-73 Nantilla Road, Clayton North, Vic. 3168 Australia. [www.macdonaldjohnston.com.au](http://www.macdonaldjohnston.com.au)

Freecall 1800 023 441 or phone your nearest JD MacDonald Sales Office  
Adelaide (08) 8168 2222 Brisbane (07) 3363 6400 Melbourne (03) 9271 6400 Perth (08) 9271 8455 Sydney (02) 9756 1622  
[enquiry@jdmacdonald.com.au](mailto:enquiry@jdmacdonald.com.au) [www.jdmacdonald.com.au](http://www.jdmacdonald.com.au)

JD MacDonald reserves the right to, and does from time to time, make changes and improvements in design and dimensions. The photographs & line drawings of the products in this catalogue are representational only. All dimensions are in millimetres.

EnviroTube is a Trademark of MacDonald Johnston Pty Ltd

